



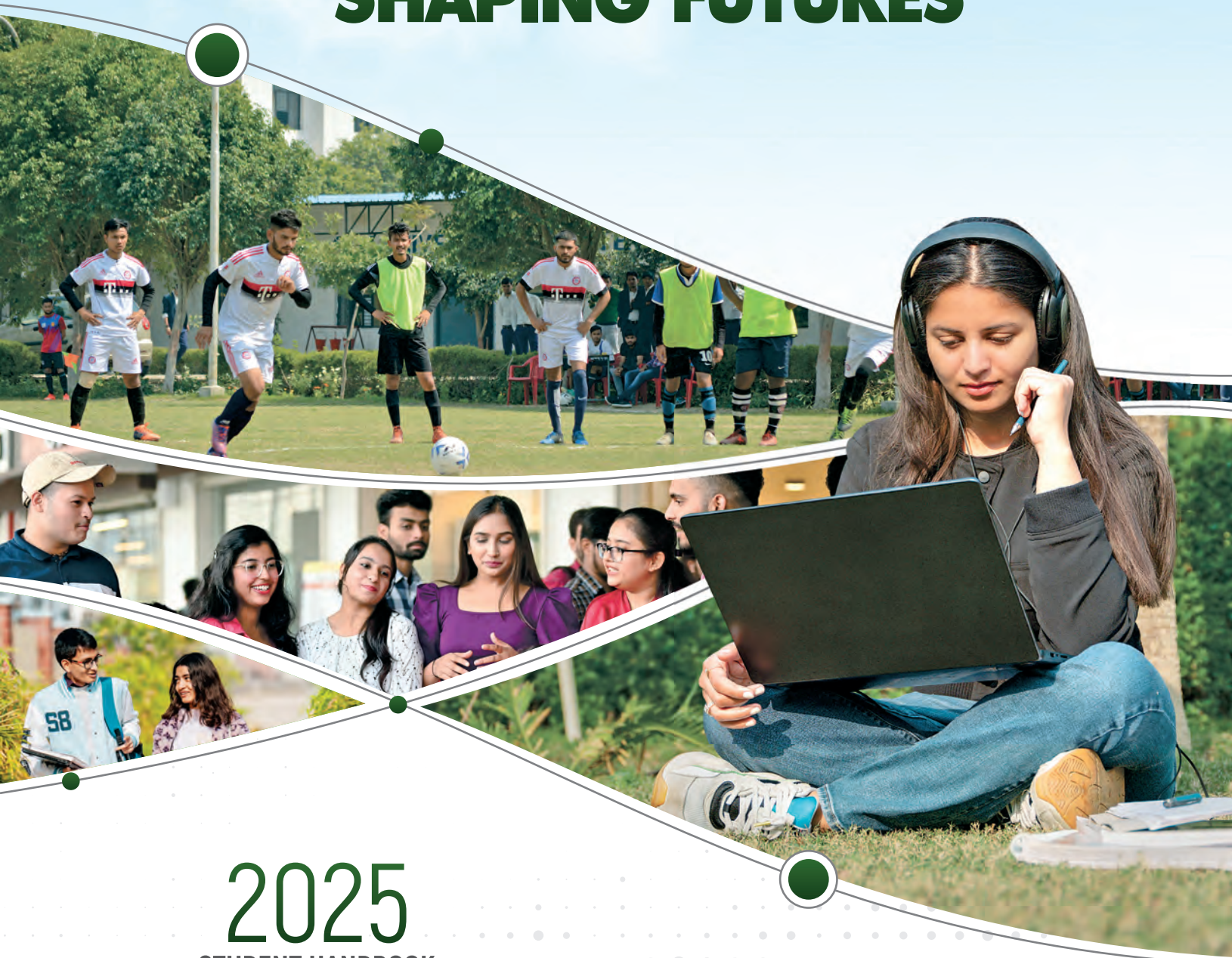
GLA
UNIVERSITY

Recognised by UGC Under Section 2(f) & 12B Status

Accredited with **A+** Grade by **NAAC**

Mathura | Greater Noida

EMPOWERING *Minds* SHAPING FUTURES



2025
STUDENT HANDBOOK

www.gla.ac.in

OUR INSPIRATION

Late Shri Ganeshi Lal Ji Agrawal
(1910-1977)



OUR JOURNEY

In the year 1998, the first step was taken by Shri Narayan Das Agrawal to fulfil his father's dream by establishing GLA Institute of Technology and Management. It went on to take the shape of the GLA Group of Institutions and finally became GLA University in the year of 2010 through the U.P. State Legislative Act of 2009 (UP Act 21 of 2010).

The University is recognized by UGC under section 2(f) with 12B Status. GLA University is a NAAC A+ Accredited institution with a score of 3.46 out of 4.

GLAU has been ranked as the 53rd best pharmacy college in India by NIRF. It is also a member of the Association of Indian Universities (AIU) and its management programs are accredited by IACBE (International Assembly of Collegiate Business Education). Also, it is an educational member of the Association to Advance Collegiate Schools of Business (AACSB).

Home to over 23000+ students, the university provides education at Diploma, Undergraduate, Postgraduate and Doctoral levels in various disciplines of Engineering, Management, Commerce, Legal Studies, Biotechnology, Pharmacy, Library Sciences, Agriculture, Applied Sciences & Humanities, and Education.





Shri Narayan Das Agarwal
Hon'ble Chancellor, GLA University

Chancellor's Note

WELCOME TO GLA UNIVERSITY

Over the past two and a half decades, GLA University has acquired a reputation of imparting quality education. At GLAU we strive to offer all our students with an all-round professional development backed by a strong network of placement partner companies and plenty of opportunities to follow extra-curricular interests.

Our interactive and engaging pedagogy supports the holistic development of our students. Convention and modernity come together at GLAU to offer 'the best' to our students. We welcome you to explore our world-class infrastructure and amenities. With a thriving learning environment, we aspire to provide students with truly a world-class learning experience.



Prof. Anup Kumar Gupta

Vice Chancellor, GLA University

As a University, we are committed to providing you with the education and resources needed to achieve your goals and realize your full potential. It is important to remember that you are not alone in the journey of achieving your career goals. We are with you.

“GLAU is dedicated to equipping you with the education and resources essential for achieving your goals and unlocking your full potential.”

I encourage you to stay connected with your peers, mentors, and advisors, as they are here to provide you with the support and guidance needed to succeed. Remember that your education is an investment in your future, and the skills and knowledge you acquire here will serve you well throughout your lifetime. Stay focused on your goals, and do not let any circumstances distract you from achieving them.

Finally, I want to remind you that success is not always easy, but it is always worth it.



Mr. Ashok Kumar Singh

Registrar, GLA University

It is a matter of immense pleasure for me to be a part of the GLA University Mathura family. Our students have come from the folds of one family to another in their quest for knowledge. Henceforth, one needs to feel that their teachers, seniors and peers form an extended family from whom they get full guidance, support and help to move ahead in life as professionals in the programmes they have opted for.

“Our students have come from the folds of one family to another in their quest for knowledge.”

The university has a blend of experienced and young faculty members who are highly qualified in their fields of expertise. Our faculty members publish their research outcomes in high-impact factor journals of repute regularly. There is an active interaction between faculty and students on campus. The learning experiences on the campus pave a strong path for the enhancement of the overall development of the learners.



Mr. Neeraj Agrawal

CEO, GLA University

"Higher education now focuses on outcomes, aiming to enhance global competitiveness and inclusive growth."

Education is a powerful tool for both personal and global transformation, emphasizing long-term growth over immediate results. Teachers are crucial in fostering effective learning environments, encouraging students to embrace challenges and learn from mistakes. Higher education now focuses on outcomes, aiming to enhance global competitiveness and inclusive growth. At GLA University, inspired by Michelangelo's view on aiming high, the objective is not just to function but to excel. The university's student-centric policies drive continuous improvement, aligning with world-class standards to achieve excellence. Through a perfect blend of innovation, dedication, and holistic development, GLA University prepares its students to become future-ready leaders and changemakers. By nurturing critical thinking and fostering a culture of lifelong learning, the university empowers individuals to contribute meaningfully to society. At GLA, excellence isn't just a goal—it's a way of life.



Mr. Vivek Agrawal

CFO, GLA University

"I believe GLA provides enough competitive academic inputs, open-mindedness and a learner-focused set-up."

A lot of emphasis is laid on the overall personality development of the students so as to foster in them the necessary drive and confidence..... ""I offer opportunities for the ever aspiring and talented youth with an urge to acquire professional education in the conventional and newly emerging areas. Today, when we are 20 years old, I believe GLA provide enough competitive academic inputs, open mindedness and learner-focused set up. It is, therefore, very essential that you choose a program, which meets your aptitude, capability and capacity. I invite you to become a part of our vibrant culture and become a professional partner in laying sound foundation for the corporate world and the nation as a whole." With a steadfast commitment to excellence and innovation, GLA University ensures that every student is equipped with the skills and mindset to thrive in a dynamic global landscape. Together, let us embark on this transformative journey to achieve your aspirations and contribute meaningfully to society. At GLA, your future begins today.

MATHURA CAMPUS



GREATER NOIDA CAMPUS



GLA University proudly introduces its Greater Noida campus-the first off-campus centre of a private university in India! Designed to bring industry-integrated learning directly to Delhi/NCR, this campus aims to bridge the gap between academia and industry. Alongside rigorous academic programs, students benefit from hands-on industry exposure, equipping them with the skills needed to excel in the workforce. Our Greater Noida campus opens doors for students who may not be able to relocate to Mathura, offering them a golden opportunity to pursue their ambitions and become job-ready professionals under the aegis of industry experts.

GLA University, Mathura is accredited with coveted **NAAC A+ Grade with a score of 3.46** on four-point scale. It has got 12B status from UGC; and is approved by UGC, PCI, NCTE, and BCI. Apart from this, the Institute of Pharmaceutical Research, GLA University is ranked 53rd best pharmacy institution in India in the latest NIRF Ranking 2024. Moreover, GLA University has attained a worldwide rank in 1001-1200 Band, AIR 45, and Research Quality (India) Rank of 21 in the TIMES Higher Education Ranking 2025.

GLAU has been bestowed with a membership of the Association of Universities of Asia and the Pacific (AUAP) and the Association of Indian Universities (AIU).

GLA University offers multidisciplinary education in Engineering, Management, Pharmacy, Education, Biotechnology, Polytechnic, Science & Humanities, Education, Commerce, Agriculture Science, and Law. The University is home to over **23,000 students** and **700+ well-qualified, experienced faculty** members.



GLA, NOW ONLINE



B.Com | BBA | BCA | MCA | MBA

- *Live & Interactive Lectures by Expert Faculty*
- *Advanced Learning Management System*
- *Flexible Learning - Anytime, Anywhere*
- *Live Classes Over the Weekend*
- *Exams through Virtual Proctoring*
- *Direct Learner Support Access*



1998

Inception of
GLA Institute of Technology &
Management



2006

Establishment of:

- Institute of Business Management
- Institute of Professional Studies
- Institute of Pharmaceutical Research

2008

GLNA Institute of Technology &
Management Emerged

2010

GLA Evolved into
GLA University



2014

A New Era Begins with
Faculty of Education





Establishment of Institute of
Legal Studies & Research

2018

2019

Inauguration of
Faculty of Agricultural Sciences



2022



- Inauguration of CSED- Industry 4.0 Facility Hon'ble CM of UP, Yogi Adityanath Ji
- Establishment of GLA University Online, CDOE



Started a New Campus
in Greater Noida

2024

NURTURING EXCELLENCE INSPIRING FUTURES



55 LPA Highest CTC by Njuma Consulting, USA

39K Global Alumni

46000+ Alumni in **1800+** MNCs

6000+ Alumni Working Abroad

6.3 LPA Average CTC

14 Research Centres

700+ Experienced Faculty

7.5 LPA Average CTC in Engineering

1500+ Alumni Working in Fortune 500 Companies

150+ International Tie-ups

157 State-of-the-art Labs

19.8 LPA Highest CTC in Management

86% Overall Placement in Past 5 Years

2500+ Job Offered (Batch 2025)

75+ Patents Granted



AN INDUSTRY INTEGRATED LEARNING CAMPUS.

—→Your Future Begins Here



GREATER NOIDA CAMPUS



- **Industry-Integrated Learning:** The curriculum is designed in compliance with industry demands to ensure students gain practical, real-world knowledge.
- **Hands-On Learning with Industry Experts:** Students stay ahead with emerging technologies like Generative AI, Data Science, Cybersecurity, Blockchain, Business Analytics, AI in Business, etc. taught by industry leaders for practical, real-world exposure and career readiness.

- **Hands-On Workshops:** Training on emerging technologies and industry-relevant tools prepares students for future job roles.
- **Live Projects & Case Studies:** Real-world problem-solving experiences enhance critical thinking and application-based learning.
- **Frequent Industry Visits:** Exposure to corporate environments bridges the gap between academic learning and practical implementation.
- **Small Batch Sizes for Focused Learning:** Personalized attention ensures better understanding and skill development.
- **Career-Driven Approach:** The university emphasizes employability, providing students with essential skills for professional success.
- **Networking Opportunities:** Interaction with industry leaders, alumni, and professionals helps students build valuable connections.
- **Innovation & Research Culture:** Encouraging students to work on innovative projects to ensure creativity and technological advancements.
- **Holistic Development:** A balanced focus on academics, co-curricular activities, and personality development shapes well-rounded professionals.

Courses Offered:

B. Tech CSE | B. Tech CSE-AIML
BBA in Management Science
BCA in Data Science | MBA

Industry-Learning Partner
**A CORPORATE
TALK SHOW**
LAUNCHING IN **MAY 2025**





PAVING YOUR WAY TO **DREAM CAREERS**

TRAINING & PLACEMENT CELL

The Department of Training and Placement is an integral part and backbone of the University. We, at GLAU, strongly believe in the creation of qualitative human resources with the training of intellectual minds. To help students stand out and gain a competitive edge over others, we emphasize the development of both functional skills and an exceptional practical outlook.

55LPA Highest Package

86% Average Placement
in Last 5 years

1800+ Top Recruiters from
Diverse Industries

2500+ Job Offered
(Batch 2025)

1500+ Alumni in Fortune
500 Companies

7.5LPA Average CTC in
Engineering

-- INTERNSHIPS --

Vidhi Ajmera
B. Tech CSE (3rd Year)



**Goldman
Sachs**

STIPEND:

19.5 LPA

Naman Gupta
B. Tech CSE



J.P.Morgan

STIPEND:

9.0 LPA



Microsoft

B. Tech CS (Batch 2026)

GAURI

PIYUSH

CHHAVI

ANJALI



Bhoomika Mehra
B. Tech CSE (3rd Year)



amazon

STIPEND:

15 LPA

**5 STUDENTS
SELECTED
FOR INTERNSHIP
AT
Deloitte.**

and many more....

OUR **SHINING** GLAdiators



Vidhan Sharma

55 LPA



Kushagra Gangwar

44 LPA



Pranjul Maheshwari

41 LPA



Lucky Thandel

36 LPA



Hardik Gaur

33 LPA



Shalini Kumari

32 LPA



Abhay Kumar

28 LPA



Meghansh Bansal

28 LPA



Aditya Vishwanathan

25 LPA



Chirag Singla

23 LPA



Aryan Dahiya

21 LPA



Adarsh Bhardwaj

19.8 LPA



Ashwani Saraswat

19.8 LPA



Shyama Agrawal

19.75 LPA



Ananya Agrawal

19.75 LPA



Priyanshi Agrawal

19.5 LPA



and many more....

GLadiators WORK AT

CIVIL ENGINEERING



MECHANICAL ENGINEERING



and Many more....

MANAGEMENT



and Many more....

COMPUTER SCIENCE & ENGINEERING



and Many more....

ELECTRONICS AND COMMUNICATION ENGINEERING



ELECTRICAL & ELECTRONICS ENGINEERING



PHARMACY / BIOTECHNOLOGY



DIPLOMA ENGINEERING



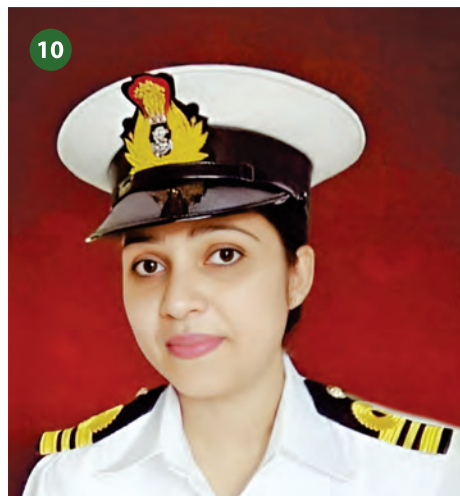
LAW



OUR EMINENT ALUMNI

GLA University takes immense pride in its successful alumni who have become trailblazers in diverse fields globally. With a solid foundation and cutting-edge education, GLAdiators thrive as entrepreneurs, industry leaders, innovators, and top government officials. Their achievements reflect the university's commitment to nurturing talent and fostering a culture of excellence. These accomplished individuals stand as a testament to GLA University's dedication to shaping future leaders and contributing to society.





1. **Sanchit K. Garg**
Assistant Director General,
Ministry of Communication,
Govt. of India
2. **Uma Sharma**
Indian Railway
Personnel Board
3. **Amit Verma**
Team Lead.,
Orange Business
4. **Sankripti Chaudhary**
Major,
Indian Armed Forces
5. **Bhoopesh Sharma**
DevOps Technical Architect
HCL Technologies
6. **Raj Kumar Bhagat**
Sr. VP,
Goldman Sachs
7. **Prashant**
Solution Architect
Birla Soft
8. **Nutan Rathore**
Mayor, Firozabad
9. **Kajal Jawala**
IAS, AIR 28
10. **Archana Chaudhary**
Lieutenant Commander,
Indian Navy
11. **Anshul Arjariya**
Scientist, ISRO
12. **Merajul Haque**
Director, Business Consulting,
Ernst & Young
13. **Devsheesh Saxena**
Senior Manager
Digital India Corp., MeitY
14. **Mohit Varshney**
Sr. Data Analyst, Vodafone
15. **Mohit Dixit**
HRBP Lead Chief
Manager HR, Infravision

A HUB OF NEW-AGE LEARNING

At GLA University, we're committed to preparing our students for the ever-evolving landscape of the professional world. Our education is meticulously crafted to align seamlessly with emerging market trends, ensuring that our students are equipped to seize opportunities within their respective fields. We take immense pride in nurturing our students, whom we fondly refer to as GLAdiators, into confident professionals ready to conquer the challenges of tomorrow.

Central to our success is our emphasis on modern learning paradigms. We empower our students to thrive in an increasingly digital and tech-driven society by staying at the forefront of educational innovation. Our courses are meticulously designed in collaboration with industry experts, ensuring that our curriculum reflects various industries' latest advancements and future demands.

At GLAU, our GLAdiators delve into cutting-edge fields such as **Artificial Intelligence, Machine Learning, Generative AI, Robotics, Gaming Technology, Blockchain, IoT, Data Analytics**, and much more. Through hands-on experience and practical learning, our students gain invaluable insights and skills that set them apart in the job market.

With GLA University, the path to success is not just about acquiring knowledge; it's about mastering the skills that will shape the future of industries worldwide. Join us, and let's embark on a journey of innovation, growth, and endless possibilities together.



EV Technology



Robotics



Business Analytics



Artificial Intelligence & Machine Learning



Financial Markets & Banking



Gaming Technology



Blockchain



Smart Manufacturing



SAP



IoT

EMPOWERING GLOBAL LEADERS

GLA University, an epitome of academic brilliance, has established 150+ MoUs with esteemed international institutions worldwide. From the USA to the UK, Australia to France, these partnerships enrich student experiences through immersion, faculty exchange, research collaboration, and curriculum enhancement. Our commitment to fostering global leaders transcends borders, creating a diverse and vibrant learning milieu. At GLA University, every student embraces their role as a global citizen, poised to make a significant impact on the world stage.



INTERNATIONAL MOUs

 St Petersburg University	 TAYLOR'S UNIVERSITY WISDOM • INTEGRITY • EXCELLENCE	 SUNWAY UNIVERSITY	 UNIVERSITY OF MALAYA	 AIT Asian Institute of Technology	 UNIVERSITY OF ZULULAND	 Amirkabir University of Technology (Tehran Polytechnic)
 University of Peradeniya	 UNIVERSITÀ DI TORINO	 VILNIUS TECH Vilnius Pedagogical University	 UNIVERSITÀ DEGLI STUDI FIRENZE	 L-Università ta' Malta	 UFRGS UNIVERSIDADE FEDERAL DO RIO GRANDE DO SUL	
			 MELBOURNE CLOUDS LAB			

and Many more....

NATIONAL MOUs

 EVERTOUCH HEALTHCARE & GROUP	 AppSquadz Software Where Expectations meet Excellence	 IBM	 GEMINI SOLUTIONS VISUALIZE SUCCESS	 Tech Mahindra	 rubicon	
 NIT SRINAGAR National Institute of Technology, Srinagar	 BSE INSTITUTE	 SAVYAPHARMA Pharmaceutical Solutions	 NISE	 Shikum Pharmaceutical Pvt. Ltd.	 VATS Health Care Products	
 SIGNA where... health comes from	 JBM Group Our milestones are touchstones	 seekho	 RAJEEV PRATAP SINGH The World's Largest Skills University	 ESI ELITE SPORTS INDIA	 A.S.B.A.S.J.S.M. Post Graduate College Bareilly (U.P.) Est. 1971 NAAC Accredited B++ Grade	
	 NUMERIC A Group brand legend	 JAGAT PHARMA	 aeroqube			

and Many more....

CSED INDUSTRY 4.0 FACILITY

ENGINEERING PROGRAMS ALIGNED
WITH INDUSTRY 4.0

HIGHLIGHTS:

- Hands-on-experience on Industry size equipment
- Simulations & Designing on Industrial Licenced Software of Global Brands like PTC, Dassault & Mastercam
- Corporate experienced faculty for niche technologies. Live Industrial Projects as part of curriculum

TECHNICAL STRENGTHS:

- **ThingWorx Platform:** a complete end-to-end technology platform designed for IIoT.
- **Mastercam Inc.:** a computer-aided manufacturing software, to design and simulate parts virtually on a computer screen.
- **Dassault System:** 3D vision software CATIA that supports industrial processes.





WE CREATE JOB CREATORS

India's 14th institution with a
NewGen IEDC Lab

NewGen Innovation and Entrepreneurship Development Cell is a platform where every innovative idea is welcomed and nourished to help it grow into a successful business. It is supported by NSTEDB, DST, Govt. of India.

Numbers Testifying the Scope of Entrepreneurship at GLAU under New-Gen IEDC

- Funding Opportunity Enabled: ₹12 Crores
- Startups Supported till now: 65+
- Prototypes Developed: 125+
- Patents Published: 52
- Patents Granted: 12

INCUBATED STARTUP AT SPARKL



Villg LLP

Funding: INR -5,00,000/- by Govt. of Uttar Pradesh

"The Villg" is a platform for the artisans, aiming to flourish the Culture of Indian heritage by selling Handicrafts from various regions of India via E-commerce. "The Villg" works on a cooperative business model and helps by providing a brand, training, platforms, assuring of quality, etc.



Nogozo Pvt. Ltd.

Funding: INR -5,00,000/- by Govt. of Uttar Pradesh

Nogozo is organizing the book market specially for used book and book renting segment to make education more accessible and more affordable for everyone. It's a niche multi-service platform for buying, renting & selling new books as well as used books.



Tredmolen E-Cycle Pvt. Ltd.

It's a manufacturer of a product named Tred-e cycle which is an electric treadmill bicycle with three transmissions and can be used as three products in single product i.e., Bicycle, treadmill and e-bike in single tred-e cycle.

AWARDS & RECOGNITIONS



NAAC A++
3.46 NAAC SCORE

2024



शिक्षा मंत्रालय
MINISTRY OF
EDUCATION



NATIONAL
INSTITUTIONAL
RANKING
FRAMEWORK

RANK
53
IN INDIA
PHARMACY

2025

THE WORLD
UNIVERSITY
RANKINGS

Worldwide Rank Band 1001-1200
All India Rank 45
Research Quality (India) Rank 21



12B Status by UGC
Among the top private
universities in India to
recieve this honour



Government of
Uttar Pradesh



Accreditation for
B. Sc (H) Agri Program



Association of
Indian Universities



BAR Council
of India



Pharmacy Council
of India



National Council
for Teacher Education



Accreditation for
Management &
Commerce Programs



Member of
AACSB Business
Education Alliance

Outlook

Iconic Institutions to Look Out
for in 2025 by Outlook



दैनिक जागरण

Best Private University in UP by
'Dainik Jagran'

Times B-School

Ranked #2 in UP as the best
private university for management
education by Times B-School
Survey 2023

**INDIA
TODAY**

Ranked #3 in UP for BBA by 'The
India Today Group'



THE TIMES OF INDIA

Ranked #3 in UP amongst the Top
Engineering Colleges by 'The
Times of India'

CAREERS360

Rated 'AAAA+' amongst Young &
Promising Universities in North
India by 'CAREERS360'



Code <> perience Center

— • Powered by • —

Capgemini

Capgemini, a leading company in the IT sector, has launched its Code Experience Center (CEC) lab at GLA University, Mathura. Through this lab, students will not only be empowered in the IT field but will also gain easier access to employment opportunities.



CORPORATE ADVISORY BOARD

The Corporate Advisory Board at GLA University bridges academia and industry, fostering innovation, collaboration, and career excellence.

**Ms. Raksha Agrawal**

Vice President
Sap Labs India Pvt. Ltd.

**Mr. Mukesh Jain**

Executive Vice President & CTO
Capgemini Consulting India (P) Ltd

**Mr. Neerendra Upadhyay**

Chief Executive Officer
Npi Inc. Japan

**Mr. M. A. Baraiya**

President –HR & Admin
Kalpataru Power Transmission Ltd

**Mr. Nagesh Marwaha**

Managing Director
Eicher Polaris Pvt. Ltd.

**Ms. Madhavi Golash**

Vice President - HR
Lohia Starlinger Limited

**Mr. Sanjeev Tripathi**

Head - Human Resource
Osram Lighting Pvt. Ltd.

**Mr. Prabhanjan Kr. Prasoon**

Head - Talent Acquisition
Sopra Steria

**Mr. Anupam Roop Rai**

Chief Human Resource Officer
Sterling Tools Limited

**Dr. C. Jayakumar**

Vice President & Head Corporate HR
Larsen & Toubro Ecc (Construction) Ltd.

**Mr. Himanshu Agrawal**

Head HR
Om Logistics Ltd. (Om Group)

**Mr. Sudeep Luthra**

CHRO
Kent RO Systems

**Mr. Vinay Pradhan**

CHRO
ATS Infrastructures Ltd.

**Mr. C. N. Mahantesh**

Senior Director-Human Resource
Cyient Ltd.

**Dr. Sudhanshu Pathak**

Vice President - Human Resource
Jk Tyre & Industries Ltd.

**Ms. Asha Subramaniam**

Global CHRO
Subex Ltd

and many more...

INNOVATION

LED EDUCATION

At GLA University, we embrace **INNOVATION** to create a stimulating academic environment with research-driven education. Our students are nurtured to become industry-ready with an innovation-blended education. We leave no stone unturned in ensuring that every GLAdiator is encouraged to transform their innovative ideas into inventions.



ALL-TERRAIN VEHICLE (ATV)

Also known as quad/quadbike/quad-cycle, ATVs can travel on low tyre pressure, which enables them to travel across different terrains efficiently. At GLAU, our mechanical engineering students designed a fully-equipped ATV in compliance with the guidelines defined by the American National Standard Institute (ANSI).



RC (RADIO-CONTROLLED) PLANE

A radio-controlled aircraft or RC Plane is a small flying machine that is controlled by an operator using a hand-held radio transmitter. GLAdiators designed an RC Plane using all the main components- Brushless Motor, ESC, Servo, Propeller, Transmitter & Receiver, Battery, etc.



GO KARTING VEHICLE

The Go Karting Vehicle designed by GLA University students is a high-performance, electric kart that blends cutting-edge technology with innovative design. Featuring a lightweight chassis, precision steering, and a powerful electric motor, this vehicle promises an exhilarating and eco-friendly racing experience.



DESIGNING THE ATV

In a bustling workshop at GLA University, students are passionately immersed in the creation of an All-Terrain Vehicle (ATV). Amidst the clatter of tools and focused conversations, they meticulously assemble components, test innovative designs, and brainstorm ways to conquer challenging landscapes.

RESEARCH

INTENSIVE ENVIRONMENT



GLA University is a research-intensive institution where we emphasize experiential learning and project-based study for the students. Our state-of-the-art research facilities are driven by an advanced technological setup.

The faculty & researchers at GLAU have completed various government research projects successfully. We have spent Rs. 19 CR on research in the last 4 years. Government agencies have sanctioned a budget of Rs. 23.49 CR for our research projects, while we got funding of Rs. 159.5 lacs from non-government sectors in the past 5 years. An h-index is a metric used to measure the productivity and impact of researcher's work. GLAU has an impressive h-index of 90.

OUR RESEARCH CENTRES

- Bentley Centre of Excellence & BIM Advancement Centre
- Solar Energy Research Centre I & II
- Micro-Nano Development Research Centre
- Sustainable Environmental and Agricultural Research Centre
- Centre for Computer Vision & Intelligent System, and many more

14
Research Centres

75+
Patents Granted

850+
Patents Published

10000+
Publications

WE IGNITE SPARK

GLA University often witnesses the humble presence of global luminaries who illuminate our students with a radiance of knowledge and goodness.



Hon'ble CM of UP,
Yogi Adityanath Ji
was the Chief Guest in
11th Convocation Ceremony



Padma Shri
Prof. H. C. Verma
Former Professor IIT Kanpur



Mr. Chetan Bhagat
Author,
Alumnus: IIT-D & IIM-A



Dr. Ajit Kumar Mohanty
Chairman,
Atomic Energy Commission (AEC)
& Secretary to Govt. of India
Department of Atomic Energy (DAE)



Sh. Gaur Gopal Das
Lifestyle Coach
& Spiritual Guru



Indresh Upadhyay Ji
Spiritual Orator

MOTIVATION
is as important as
EDUCATION

TED^xGLAU

(A platform where celebrities share a TED-like experience.)

TEDxGLAU is an initiative to host self-organized events that bring people together to share a TED-like experience. TEDTalks by the eminent personalities motivate our students to excel their professional and personal lives.



Prateek Singhal
Entrepreneur

X



Vimal Daga
Life Coach



Rahul Bhargava
Educationist



Dr. Saarthak Bakshi
Medical Innovator

X

CENTRAL LIBRARY



Dive into the World of Knowledge at GLA University's Central Library! Welcome to the treasure trove of wisdom, where learning knows no bounds! GLA University's Central Library stands as a beacon of knowledge, boasting an extensive collection of over 190,000 books from esteemed national and international publishers.

GD SUBWAY

GLAU campus has 'GD Subway' where students get stationery, fruits, salon, snacks, and other daily utilities under one roof. Moreover, there are other chill-out zones where students can enjoy the delectable North Indian, Chinese, and Mexican cuisines.



Indulge in a gastronomic delight at GLA University's Cafeterias & Canteens, where delectable and hygienic meals await. Our culinary offerings cater to diverse palates, ensuring a delightful dining experience that nourishes both body and soul. Discover the joy of tasteful indulgence on campus.

CAFETERIAS & CANTEENS



SPORTS

Unleash Your Athletic Potential at GLA University- Where Champions Are Forged!

Embark on a journey of physical prowess and sportsmanship across our sprawling 20-acre sports arena. At GLA University, we've curated a world-class sporting environment that beckons our GLAdiators to discover their strength and resilience.

With a diverse array of indoor and outdoor sports facilities, our students not only partake in spirited games but also cultivate invaluable life skills. From teamwork to confidence-building, sports play a pivotal role in nurturing a healthy mind and body.

At GLAU, we are committed to molding CHAMPIONS, fostering multidimensional skills that extend beyond the playing field. Join us in the pursuit of excellence!



GYMNASIUM

A healthy mind lives in a healthy body. GLAdiators can access a fully equipped gym with modern machines on the campus. A lot of equipment are available at the gym for cardio training and weightlifting. Our students increase their endurance under the expert training. Apart from gym, the other recreational activities like Yoga and Aerobics are also available.

YOGA CENTRE

Experience serenity at GLA University's Yoga Centre, a tranquil haven promoting physical and mental well-being. Guided by seasoned instructors, our yoga sessions provide a rejuvenating escape, fostering harmony and balance. Embrace the path to holistic health with us.



LABORATORIES

Igniting Minds through Cutting-Edge Laboratories at GLA University!

Experience education like never before with GLA University's 157 state-of-the-art laboratories. Immerse yourself in hands-on learning using advanced equipment that propels theoretical knowledge into practical wisdom. Our commitment to experiential education extends beyond department-wise labs to collaborative industrial setups.



CLASSROOMS

GLA University has 227 classrooms which are built like amphitheatre, so that the teacher can give equal attention to all the students. All the rooms are air conditioned, out of which 65 are tute rooms. These modern classrooms house Wi-Fi, projectors, and various AV equipment to ensure an enriching learning experience.



AUDITORIUMS

GLA University's state-of-the-art auditoriums offer a captivating setting for academic and cultural events. Equipped with cutting-edge technology and seating arrangements, these venues ensure an immersive experience, fostering learning and cultural enrichment.



HOSTELS

At GLA University, we redefine student living through 19 state-of-the-art hostels, each meticulously designed for unparalleled comfort and convenience. Our commitment to excellence is reflected in the accolades earned, with a newly constructed 800-room hostel recognized among the 'best 11 architecture designs' by the esteemed World Architecture Community, UK. Providing a secure and nurturing environment, our hostels stand as testaments to world-class architecture, modern amenities, and a commitment to fostering a home away from home.

AAROGYAM

A 24*7 healthcare unit is run by the experienced doctors to ensure the well-being of the students. It has eight Semi-Fowler beds for patients requiring in-patient care and the OP facility with basic furniture including examination couches. Moreover, the ambulances are available on campus to deal with medical eventualities.



TRANSPORT

GLA University ensures hassle-free commuting for day scholars with its extensive fleet of 40+ buses, covering various routes. This well-maintained transportation system guarantees students a safe and comfortable journey, fostering convenience in their daily commute.

BANKS

GLA University prioritizes students' financial convenience with on-campus branches of HDFC Bank and Indian Overseas Bank along with their ATMs.



GLA UNIVERSITY A TORCHBEARER FOR SOCIAL WELFARE



A Social Initiative of GLA University

The groundwork for a better life lies in education. It is the most powerful catalyst for social transformation.

PraYaas

A social initiative to help school students and teachers by conducting health awareness camps, motivational and educative activities.

Ujjwal Braj

GLA University, with the help of students, conducts cleaning activities in areas adjoining Goverdhan hill from time to time.

National Service Scheme Cell

GLA University actively conducts activities from time to time in order to spread social awareness about issues like Child Abuse, Illiteracy, Alcoholism, Corruption etc.

Aashayein

Aashayein is an initiative that focuses on eradication of poverty and social injustice. Education is both the means as well as an end to a better life.

Shiksha Kaya-Kalp

The main purpose of an Educational Institution is teaching, research and extension activities. Under the Shiksha Kaya-Kalp initiative, GLA University, Mathura has adopted 5 villages in the adjoining area and 5 Government Primary Schools.

1. Upper Primary School Ajhai First
2. Upper Primary School Jait Second
3. Primary School Ajhai Second
4. Primary School Ajhai Kalan
5. Nagar Nigam Balika Inter College Kosi Kalan

Udaan

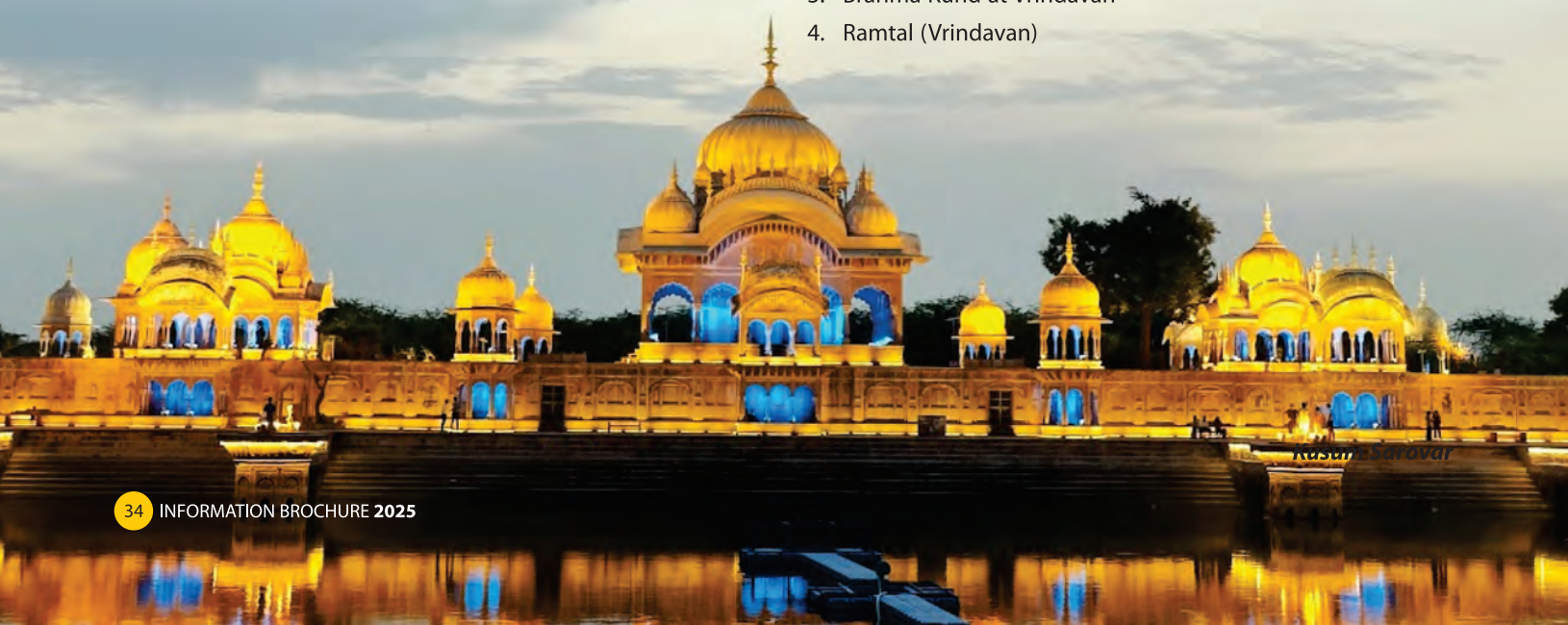
UDAAN envisions transforming the society by providing quality education to poor families to ensure a strong foundation of education.

Heritage Conservation

GLA University, Mathura is obliged to keep it alive through its contribution to the operation and maintenance of various buildings, places, ponds, and heritages sites.

The University has adopted four such sites namely:

1. Raskhan & Tajbibi Samadhi located at Gokul
2. Kusum Sarovar at Goverdhan
3. Brahma Kund at Vrindavan
4. Ramtal (Vrindavan)



13th CONVOCAATION Ceremony

The 13th Convocation Ceremony of **GLA University** was a momentous occasion, celebrating the achievements of its graduating students. The event was graced by **Prof. Anil Sahasrabudhe**, Hon'ble Chairman of NETF and Executive Committee-NAAC and NBA, as the **Chief Guest**, and **Shri Dinesh Kumar Shukla**, Hon'ble Chairman of AERB, as the **Guest of Honour**. Their inspiring addresses motivated the students to strive for excellence and contribute to society with their knowledge and skills. The ceremony marked a new chapter in the lives of the graduates, reflecting GLA University's commitment to nurturing future leaders.



4th CONVOCAATION



7th CONVOCAATION



11th CONVOCAATION



SPANDAN 2K25



Inder Sahani

Renowned Standup Comedian

Ankit Tiwari

Bollywood Singer

Panther

MTV Hustle-famed Rapper



THE 2-DAY ANNUAL CULTURAL FEST

Spandan 2k25 at GLA University was a spectacular cultural extravaganza that brought together music, laughter, and electrifying energy! The campus buzzed with excitement as renowned Bollywood singer Ankit Tiwari captivated hearts with his soulful voice while Panther, the MTV Hustle-famed rapper, set the stage on fire with his power-packed performance. Adding a dose of laughter, stand-up comedian Inder Sahani had the audience in splits with his hilarious set. The event was a perfect blend of rhythm, rhyme, and revelry, offering students an unforgettable evening of entertainment and joy. Spandan 2k25 truly lived up to its name - a celebration of culture and spirit!

AN EVENTFUL CAMPUS



DANDIYA NIGHT

Traditional Dandiya and High-energy DJ Music

Dandiya X DJ Night is a night of rhythm and revelry! GLAdiators groove to the beats of traditional dandiya and high-energy DJ music, blending culture with electrifying fun. Dandiya sticks, dance floor, and the celebrations begins every year.

SRIJAN

National Inter-School Competition

Srijan is an annual inter-school competition where over 3500 school students participate in various indoor & outdoor sports, dance & singing competitions, model making, powerpoint presentation, and lot more. The schools from different regions of Uttar Pradesh participate in this event.



TECHNAVYA

The Largest Tech Fest

Technavya at GLA University is an exhilarating annual tech fest, uniting bright minds. Packed with innovation, competitions, and workshops, it sparks a dynamic exchange of ideas and technological prowess.

GLA'S GOT TALENT

A Talent Show

GLA's Got Talent is a vibrant cultural extravaganza where students showcase their flair for singing, dancing, drama, and more! A stage where creativity meets passion, this event celebrates the incredible talents of GLAdiators, fostering artistic expression and entertainment. Join us for a night of unforgettable performances and electrifying energy!





PARV

The Annual Holi Milan Mahotsav

Parv at GLA University is an exuberant Holi Milan Mahotsav, where colors unite the campus in a vibrant celebration, fostering joy and camaraderie among students and faculty.

E-CONCLAVE

Annual Flagship Entrepreneurial Event

E-Conclave at GLA University is the pinnacle of entrepreneurship, featuring eminent entrepreneurs from prestigious companies. This annual event inspires and educates students on the dynamic world of entrepreneurship.



MAITREE

Annual National Level Sports Meet

Maitree, hosted by GLA University, is an annual extravaganza that brings students, faculty, and the community together in a grand celebration of culture, talent, and creativity.

AAGAAZ

Inter-University Sports Fest

GLA University proudly sponsored the Braj Warriors, a stellar cricket team from Mathura and its suburbs, mentored by cricket legend Harbhajan Singh. During Aagaaz-2025's Opening Ceremony, the team's Captain and Vice-Captain were unveiled in a special Meet & Greet. The event was graced by Mr. Neeraj Agrawal, Ms. Radhika Agrawal, Mr. Sunil Agarwal, Mr. Luv K. Bansal, and Mrs. Nandini Bansal, celebrating sportsmanship and community pride.





WHERE HISTORY MEETS DEVOTION

MATHURA

DEVOTED TO Krishna DEDICATED TO Education



GLA University is located in the divine land of Mathura. Formerly known as Madhuvan due to its thick trees and dense forest, Mathura is located on the bank of the Yamuna River. The ancient & sacred city is immersed in the ecstasy of 'Radha-Krishna' devotees. Mathura has a mention in the epic saga 'Ramayana' too.

01

TEMPLES

Mathura has many renowned temples depicting the different forms of Keshav. The world famous Prem Mandir and Banke Bihari Mandir are in close proximity to GLA University.

02

GHATS

Mathura is a city of sacred ghats. Sanctify your mind, body, and soul at 25 bathing ghats. Vishram Ghat is the holiest ghat in Mathura.

03

FOOD

Mathura is known for its tempting food. You can enjoy Indian delicacies like Peda & Hing Kachori in Mathura.



PROGRAMMES AND FEE STRUCTURE

INSTITUTE OF ENGINEERING & TECHNOLOGY								
Programme	Duration in Yrs.	1st year	2nd year	3rd year	4th year	5th year	6th year	1st Sem. Fee
B. Tech Computer Science & Engg. (CSE) (Specializations from 2nd Year) • AI & Data Science • Cybersecurity & AI • Gaming Technology • Cloud & DevOps • IoT & Robotics • Business Informatics • Full Stack Development	4	2,00,000	2,08,000	2,16,000	2,24,000			1,01,500
B. Tech Electronics Communication Engineering (ECE)	4	1,85,000	1,90,000	1,95,000	2,00,000			94,000
B. Tech ECE (with Minor in CS)	4	1,85,000	1,90,000	1,95,000	2,00,000			94,000
B. Tech Electrical and Electronics Engineering (EN)	4	1,85,000	1,90,000	1,95,000	2,00,000			94,000
B. Tech Electronics and Computer Engineering	4	1,85,000	1,90,000	1,95,000	2,00,000			94,000
B. Tech Mechanical Engineering (ME)	4	1,85,000	1,90,000	1,95,000	2,00,000			94,000
B. Tech ME (With Specialization in Automobile)	4	1,85,000	1,90,000	1,95,000	2,00,000			94,000
B. Tech ME (With Specialization in Mechatronics)	4	1,85,000	1,90,000	1,95,000	2,00,000			94,000
B. Tech ME (With Minor in CS)	4	1,85,000	1,90,000	1,95,000	2,00,000			94,000
B. Tech Civil Engineering (CE)	4	1,85,000	1,90,000	1,95,000	2,00,000			94,000
B. Tech Electrical Engineering (EE)	4	1,85,000	1,90,000	1,95,000	2,00,000			94,000
B. Tech EE (With Minor in CS)	4	1,85,000	1,90,000	1,95,000	2,00,000			94,000
B. Tech EE (Specialization in Electric Vehicle Technology)	4	1,85,000	1,90,000	1,95,000	2,00,000			94,000
Eligibility	*Passed 10+2 examination with Physics and Mathematics as compulsory subjects along with Chemistry / Computer Science. With at least 50% marks in the above subjects, taken together and 50% marks overall + *On the basis of performance in GLAET (An online MCQ test of 120 minutes)							
B. Tech ECE with specialization in VLSI	4	1,85,000	1,90,000	1,95,000	2,00,000			94,000
Eligibility	*Passed 10+2 examination with Physics and Mathematics as compulsory subjects along with Chemistry / Computer Science. With at least 60% marks in the above subjects, taken together and 60% marks overall + *On the basis of performance in GLAET (An online MCQ test of 120 minutes)							
B. Tech (Hons.) CSE-AI and Analytics in collaboration with intel NEC	4	2,40,000	2,45,000	2,50,000	2,55,000			1,21,500
Eligibility	*Passed 10+2 examination with Physics and Mathematics as compulsory subjects along with English / Computer Science . With at least 75% marks in the above subjects, taken together and 75% marks overall + *On the basis of performance in GLAET (An online MCQ test of 120 minutes) & followed by PI.							
B. Tech CSE-AIML in collaboration with Microsoft	4	2,35,000	2,43,000	2,51,000	2,59,000			1,19,000
Eligibility	*Passed 10+2 examination with Physics and Mathematics as compulsory subjects along with English / Computer Science. With at least 65% marks in the above subjects, taken together and 50% marks overall + *On the basis of performance in GLAET (An online MCQ test of 120 minutes).							

5% Marks Relaxation to SC/ST Category Students.


» **Education Loan Facility Available** «

INSTITUTE OF ENGINEERING & TECHNOLOGY

Programme	Duration in Yrs.	1st year	2nd year	3rd year	4th year	5th year	6th year	1st Sem. Fee
B. Tech Lateral Entry • Computer Science & Engineering	3		2,00,000	2,15,000	2,30,000			1,01,500
B. Tech Lateral Entry • Civil Engineering • Electrical Engineering • Electronics and Communication Engineering • Mechanical Engineering • Electrical & Electronics Engineering • Electronics and Computer Engineering • ECE (Specialization in VLSI) • ECE (With Minor in CSE) • EE (Specialization in EV Technology)	3		1,81,000	1,86,000	1,91,000			92,000
Eligibility	*Passed a minimum three-year or two-year (Lateral Entry) Diploma examination with at least 50% marks, ANY branch of Engineering and Technology, recognized by the Board of Technical Education/University. Or B Sc (PCM) with minimum 60% marks. Or B.Tech 1st Year in the available stream with a minimum of 60% marks, subject to approval from the Equivalence Committee for admission from an external university/college. *On the basis of performance in GLAET (An online MCQ test of 60 minutes)							
BCA	3	1,10,000	1,15,000	1,20,000				56,500
BCA (Hons./By Research)	4	1,10,000	1,15,000	1,20,000	1,25,000			56,500
BCA/BCA (Hons. / By Research)- Specialization in Digital Marketing (AEDP)	3/4	1,10,000	1,15,000	1,20,000	1,25,000			56,500
Eligibility	*Passed 10+2 examination with at least 50% marks in any stream *On the basis of performance in GLAET (An online MCQ test of 60 minutes).							
BCA with specialization in Data Science	3	1,40,000	1,45,000	1,50,000				71,500
Eligibility	*Passed 10+2 examination with mathematics at least 60% marks *On the basis of performance in GLAET (An online MCQ test of 60 minutes).							
M. Tech Computer Science & Engineering	2	1,77,000	1,78,000					90,000
Eligibility	*First Division in BE/B. Tech. or equivalent in Computer Science and Engineering / Information Technology / Electronics Engineering Electronics and Communication / Engineering Electronics and Telecommunication Engineering / Telecommunication Engineering / Electronics and Instrumentation Engineering / Electrical & Electronics Engineering / Electrical Engineering or any combinations of these disciplines given mentioned, MCA and MSc in Maths, CS/ IT, Stats and allied streams. *On the basis of performance in GLAET (An online MCQ test of 60 minutes).							
M. Tech CE (Structural Engineering)	2	1,77,000	1,78,000					90,000
M. Tech Electrical Engineering	2	1,77,000	1,78,000					90,000
M. Tech Electronics and Comm. Engineering	2	1,77,000	1,78,000					90,000
M. Tech Energy System	2	1,77,000	1,78,000					90,000
M. Tech ME (Fluid & Thermal Sciences)	2	1,77,000	1,78,000					90,000
M. Tech ME (Production)	2	1,77,000	1,78,000					90,000
M. Tech ME (Design)	2	1,77,000	1,78,000					90,000
Eligibility	*First Division in B Tech in the relevant branch or For Energy Systems, (First Division in B Tech in EE, EN, EC, ME or M Sc Physics.) *On the basis of performance in GLAET (An online MCQ test of 60 minutes).							
MCA	2	1,48,000	1,53,000					75,500
Eligibility	*Passed Recognized Bachelor's Degree of minimum 3 Yrs duration with Mathematics as a compulsory subject at 10+2 level or at graduate level. With at least 50% Marks *On the basis of performance in GLAET (An online MCQ test of 90 minutes).							
Ph.D. (EE, ME, ECE, CE, CSE, CA)	3	75,000	75,000	75,000				37,500
Eligibility	*Passed Master's degree (Appropriate discipline/field/subject) with at least 60% Marks *On the basis of performance in GLAET (An online MCQ test of 60 minutes)							

5% Marks Relaxation to SC/ST Category Students.

INSTITUTE OF BUSINESS MANAGEMENT

Programme	Duration in Yrs.	1st year	2nd year	3rd year	4th year	5th year	6th year	1st Sem. Fee
BBA • Human Resource • Marketing • Finance • Banking & Insurance • Entrepreneurship	3	1,10,000	1,15,000	1,20,000				56,500
BBA (Hons./By Research) • Human Resource • Marketing • Finance • Banking & Insurance • Entrepreneurship	4	1,10,000	1,15,000	1,20,000	1,25,000			56,500
BBA Family Business	3	1,40,000	1,45,000	1,50,000				71,500
Eligibility	*Passed 10+2 examination with at least 50% marks in any stream *On the basis of performance in GLAET (An online MCQ test of 60 minutes).							
BBA Management Sciences	3	1,40,000	1,45,000	1,50,000				71,500
BBA/BBA (Hons. / By Research)- Data Analytics & Business Intelligence	3	1,45,000	1,50,000	1,55,000	1,60,000			74,000
Eligibility	*Passed 10+2 examination with at least 60% marks in any stream *On the basis of performance in GLAET (An online MCQ test of 60 minutes).							
MBA Dual Specialization (any 2 to be selected) • Marketing • Human Resource • Financial Management • International Business Management • Operations Management • Banking & Financial Services • Business Analytics • Supply Chain Management	2	2,35,000	2,45,000					1,19,000
Eligibility	*Passed Recognized Bachelor's Degree of Minimum 3 Yrs duration. With at least 50% Marks *On the basis of performance in GLAET (An online MCQ test of 90 minutes) Preference will be given to high scorers of CAT, MAT, XAT, UPSEE etc.							
MBA (Financial Markets & Banking)	2	2,75,000	2,85,000					1,39,000
MBA - Logistics and Supply Chain Management in Academic collaboration with 	2	2,70,000	2,80,000					1,36,500
Eligibility	*Passed Recognized Bachelor's Degree of minimum 3 Yrs duration. With at least 50% Marks *On the basis of performance in GLAET (An online MCQ test of 90 minutes) followed by GD & PI. Preference will be given to high scorers of CAT, MAT, XAT, UPSEE etc.							
MBA (Hons.) Dual Specialization (Any 2 to be selected) • Marketing • Human Resource • Financial Management • International Business Management • Operations Management • Banking & Financial Services • Business Analytics • Supply Chain Management	2	2,80,000	2,90,000					1,41,500
MBA- Business Analytics in academic partnership with Institute of Analytics (IoA), UK and International Skill Development Corporation Limited (ISDC)	2	2,70,000	2,80,000					1,36,500
Eligibility	*Passed Recognized Bachelor's Degree of Minimum 3 Yrs duration. With at least 60% Marks *On the basis of performance in GLAET (An online MCQ test of 90 minutes) followed by GD & PI. Preference will be given to high scorers of CAT, MAT, XAT, UPSEE etc.							
Ph.D in Management	3	95,000	95,000	95,000				47,500
Eligibility	*Passed Master's degree (Appropriate discipline/field/subject) with at least 55% Marks *On the basis of performance in GLAET (An online MCQ test of 60 minutes)							

5% Marks Relaxation to SC/ST Category Students.

FACULTY OF EDUCATION

Programme	Duration in Yrs.	1st year	2nd year	3rd year	4th year	5th year	6th year	1st Sem. Fee
B.Ed	2	53,000	53,000					28,000
Eligibility	*At least 50% marks either in the Bachelor's Degree and/or Master's Degree in Sciences / Social Sciences/ Humanity OR Bachelor's in Engineering or Technology with at least 55% marks *On the basis of performance in GLAET (An online MCQ test of 60 minutes).							
Ph.D in Education	3	75,000	75,000	75,000				37,500
Eligibility	*Passed Master's degree (Appropriate discipline/field/subject) with at least 60% Marks *On the basis of performance in GLAET (An online MCQ test of 60 minutes)							

INSTITUTE OF LEGAL STUDIES AND RESEARCH

B. A. LLB (Hons.)	5	1,40,000	1,45,000	1,50,000	1,55,000	1,60,000		71,500
BBA LLB (Hons.)	5	1,40,000	1,45,000	1,50,000	1,55,000	1,60,000		71,500
Eligibility	*Passed 10+2 examination with at least 50% marks in any stream *On the basis of performance in GLAET (An online MCQ test of 60 minutes).							
LLM • Banking, Finance, and Insurance Law • Cyber Law and Data Privacy Law	1	1,45,000						74,000
Eligibility	*Passed 3-year LL. B or Five-Year Integrated LL.B or an equivalent degree from a recognized University with at least 50% marks. *On the basis of performance in GLAET (An online MCQ test of 60 minutes).							
Ph.D in Law	3	95,000	95,000	95,000				47,500
Eligibility	*Passed Master's degree (Appropriate discipline/field/subject) with at least 55% Marks *On the basis of performance in GLAET (An online MCQ test of 60 minutes)							

INSTITUTE OF PHARMACEUTICAL RESEARCH

B. Pharm	4	1,56,000	1,61,000	1,66,000	1,71,000			79,500
Eligibility	*Passed 10+2 examination with Physics and Chemistry as compulsory subjects along with Mathematics / Biology. With at least 50% marks in the above subjects, taken together and 50% marks overall (Candidate must attain the age of 17 years on 31.12.2025) *On the basis of performance in GLAET (An online MCQ test of 90 minutes)							
B. Pharm Lateral Entry	3		1,56,000	1,61,000	1,66,000			79,500
Eligibility	*Passed Diploma in Pharmacy from a PCI approved Institution, with at least 60% marks. (Candidate must attain the age of 18 years on 31.12.2025) *On the basis of performance in GLAET (An online MCQ test of 60 minutes)							
M. Pharm • Pharmacology • Pharmaceutics	2	1,77,000	1,78,000					90,000
Eligibility	*First Division in B Pharm *On the basis of performance in GLAET (An online MCQ test of 60 minutes)							
D. Pharm	2	1,14,000	1,19,000					58,500
Eligibility	*Passed 10+2 examination with PCB / PCM with at least 50% marks. (Candidate must have attained the age of 17 years on 31.12.2025) *On the basis of performance in 12th % PI							

5% Marks Relaxation to SC/ST Category Students.

INSTITUTE OF PHARMACEUTICAL RESEARCH


Programme	Duration in Yrs.	1st year	2nd year	3rd year	4th year	5th year	6th year	1st Sem. Fee
Pharm. D (Doctor Of Pharmacy)	6	2,25,000	2,30,000	2,35,000	2,40,000	2,45,000	2,50,000	1,14,000
Eligibility	*Passed 10+2 examination with PCB / PCM with at least 55% marks *On the basis of performance in GLAET (An online MCQ test of 90 minutes)							
Ph.D. in Pharmacy (Pharmacology, Pharmaceutical Chemistry & Pharmaceutics)	3	95,000	95,000	95,000				47,500
Eligibility	*Passed Master's degree (Appropriate discipline/field/subject) with at least 60% Marks *On the basis of performance in GLAET (An online MCQ test of 60 minutes)							

INSTITUTE OF APPLIED SCIENCES & HUMANITIES

B. Sc. Physics	3	45,000	46,000	47,000				24,000
Eligibility	*Passed 10+2 examination with Physics with at least 50% marks *On the basis of performance in GLAET (An online MCQ test of 60 minutes).							
B. Sc. Physics (Hons./By Research)	4	45,000	46,000	47,000	48,000			24,000
Eligibility	*Passed 10+2 examination with Physics with at least 50% marks *On the basis of performance in GLAET (An online MCQ test of 60 minutes).							
B. Sc. Chemistry	3	45,000	46,000	47,000				24,000
Eligibility	*Passed 10+2 examination with Chemistry with at least 50% marks *On the basis of performance in GLAET (An online MCQ test of 60 minutes).							
B. Sc. Chemistry (Hons./By Research)	4	45,000	46,000	47,000	48,000			24,000
Eligibility	*Passed 10+2 examination with Chemistry with at least 50% marks *On the basis of performance in GLAET (An online MCQ test of 60 minutes).							
B. Sc. Mathematics with Specialization in Data Science	3	45,000	46,000	47,000				24,000
Eligibility	*Passed 10+2 examination with Mathematics with at least 50% marks *On the basis of performance in GLAET (An online MCQ test of 60 minutes).							
B. Sc. Mathematics (Honours/by Research) with Specialization in Data Science	4	45,000	46,000	47,000	48,000			24,000
Eligibility	*Passed 10+2 examination with Mathematics with at least 50% marks *On the basis of performance in GLAET (An online MCQ test of 60 minutes).							
B. Sc. (Hons.) Agriculture	4	81,000	83,000	85,000	87,000			42,000
Eligibility	*Passed 10+2 examination with Physics, Chemistry & Biology/ Maths /Agriculture or Two years Diploma in Agriculture with at least 50% marks *On the basis of performance in GLAET (An online MCQ test of 60 minutes) followed by GD & PI.							
B. A. English	3	45,000	46,000	47,000				24,000
Eligibility	*Passed 10+2 examination with at least 50% marks in any stream *On the basis of performance in GLAET (An online MCQ test of 60 minutes).							
B. A. English (Hons./By Research)	4	45,000	46,000	47,000	48,000			24,000
Eligibility	*Passed 10+2 examination with at least 50% marks in any stream *On the basis of performance in GLAET (An online MCQ test of 60 minutes).							
Bachelor of Library and Information Science	1	45,000						24,000
Eligibility	*Passed Recognized Bachelor's Degree of Minimum 3 Yrs duration. With at least 45% Marks. *On the basis of performance in GLAET (An online MCQ test of 90 minutes).							

5% Marks Relaxation to SC/ST Category Students.

INSTITUTE OF APPLIED SCIENCES & HUMANITIES

Programme	Duration in Yrs.	1st year	2nd year	3rd year	4th year	5th year	6th year	1st Sem. Fee
B. A. Economics	3	45,000	46,000	47,000				24,000
B. A. Economics (Hons./By Research)	4	45,000	46,000	47,000	48,000			24,000
BA Economics/ BA Economics (Hons./ By Research) Specializations: International Economics • Development Economics • Business Admin. & Law • Industrial Economics • Banking & Finance • Behavioural Economics • International Economics • Development Economics • Business Admin. & Law • Industrial Economics • Banking & Finance • Behavioural Economics								
B. Com.	3	1,10,000	1,15,000	1,20,000				56,500
B. Com. (Hons/ By Research)	4	1,10,000	1,15,000	1,20,000	1,25,000			56,500
B. Com./B. Com. (Hons/ By Research) Specializations: Accounting and Finance • International Business • Applied Business Econ. • Banking & Insurance • Business Admin & Law								
B. Com. Global Accounting in Association with  CIMA • Auditing • Stock Market Operations • Laws • Behavioural Finance • Business Analytics • Banking and Insurance • Accounting and Finance • International Business	3	1,40,000	1,45,000	1,50,000				71,500
Eligibility	*Passed 10+2 examination with at least 50% marks in any stream *On the basis of performance in GLAET (An online MCQ test of 60 minutes).							
B. Sc. Biotechnology	3	1,10,000	1,15,000	1,20,000				56,500
B. Sc. Biotechnology (Hons./By Research)	4	1,10,000	1,15,000	1,20,000	1,25,000			56,500
Eligibility	*Passed 10+2 examination with Physics, Chemistry & Biology/ Maths / Biotechnology with at least 50% marks *On the basis of performance in GLAET (An online MCQ test of 60 minutes).							
MA English	2	49,000	50,000					26,000
Eligibility	*Passed Recognized Bachelor's Degree of Minimum 3 Yrs duration. With at least 50% Marks *On the basis of performance in GLAET (An online MCQ test of 60 minutes).							
B. Tech Biotechnology	4	1,85,000	1,90,000	1,95,000	2,00,000			94,000
Eligibility	*Passed 10+2 examination with Chemistry and Mathematics/Biology as compulsory subjects along with Physics/Computer science With at least 50% marks in the above subjects, taken together and 50% marks overall *On the basis of performance in GLAET (An online MCQ test of 120 minutes).							
B. Tech Lateral Entry • Biotechnology	3		1,81,000	1,86,000	1,91,000			92,000
Eligibility	*Passed a minimum three-year or two-year (Lateral Entry) Diploma examination with at least 50% marks, Relevant branch recognized by the Board /University OR B. Sc (PCM) with minimum 60% marks. OR B. Sc (Biotech/Microbiology/Life Science) with 60% Marks OR B. Tech 1st Year in the available stream with a minimum of 60% marks, subject to approval from the Equivalence Committee for admission from an external university/college. *On the basis of performance in GLAET (An online MCQ test of 60 minutes)							
M. Sc. Physics	2	54,000	55,000					28,500
Eligibility	*Passed B. Sc OR Equivalent Degree (with Physics) with at least 50% Marks *On the basis of performance in GLAET (An online MCQ test of 60 minutes).							
M. Sc. Chemistry	2	54,000	55,000					28,500
Eligibility	*Passed B. Sc OR Equivalent Degree (with Chemistry) with at least 50% Marks *On the basis of performance in GLAET (An online MCQ test of 60 minutes).							
M. Sc. Mathematics	2	54,000	55,000					28,500
Eligibility	*Passed B. Sc. (With Mathematics) OR Equivalent Degree (with Mathematics) with at least 50% Marks *On the basis of performance in GLAET (An online MCQ test of 60 minutes).							
M. Sc. Biotechnology	2	1,27,000	1,28,000					65,000
Eligibility	*Passed B. Sc (Biotech) OR B Sc (Life Sciences) OR B. Sc (Agriculture) OR BMLT with at least 50% marks *On the basis of performance in GLAET (An online MCQ test of 60 minutes).							

5% Marks Relaxation to SC/ST Category Students.

INSTITUTE OF APPLIED SCIENCES & HUMANITIES

Programme	Duration in Yrs.	1st year	2nd year	3rd year	4th year	5th year	6th year	1st Sem. Fee
M. Sc. Microbiology & Immunology	2	1,27,000	1,28,000					65,000
Eligibility	*Passed B. Sc (Biotech)/ Microbiology OR B. Sc (Life Sciences) Or B. Sc (Agriculture) Or BMLT with at least 50% marks *On the basis of performance in GLAET (An online MCQ test of 60 minutes).							
M. Sc. Bioinformatics	2	1,27,000	1,28,000					65,000
Eligibility	*Passed Bachelor's degree in any relevant area of Biotech/Life Science/Agriculture/Pharmacology/Math/Physics/Computer Science/BMLT with at least 50% marks *On the basis of performance in GLAET (An online MCQ test of 60 minutes).							
M. Sc. Agriculture • Agronomy • Seed Science & Technology • Soil Science • Agri. Extension • Plant Pathology • Agri. Economics • Genetics and Plant Breeding • Entomology • Horticulture-Floriculture and Landscaping • Horticulture-Fruit Science • Horticulture-Vegetable Science	2	84,000	86,000					43,500
Eligibility	*Passed B Sc OR Equivalent Degree (with Agriculture) with at least 50% Marks *On the basis of performance in GLAET (An online MCQ test of 60 minutes).							
Master of Library and Information Science	1	55,000						29,000
Eligibility	*Passed Bachelor of Library Science/ Bachelor of Library and Information Science Associate with INSDOC With at least 50% Marks *On the basis of performance in GLAET (An online MCQ test of 60 minutes)							
Dip. in Library and Information Science	1	25,000						14,000
Eligibility	*Passed 10+2 examination with at least 50% marks in any stream. *On the basis of performance in 12th % & PI							
Ph.D. in Physics, Chemistry, Mathematics, English, Astrophysics	3	75,000	75,000	75,000				37,500
Eligibility	*Passed Master's degree (Appropriate discipline/field/subject) with at least 55% Marks *On the basis of performance in GLAET(An online MCQ test of 60 minutes)							
Ph.D. in Biotechnology	3	95,000	95,000	95,000				47,500
Ph.D. in Microbiology	3	95,000	95,000	95,000				47,500
Eligibility	*Passed Master's degree (Appropriate discipline/field/subject) with at least 60% Marks *On the basis of performance in GLAET(An online MCQ test of 60 minutes)							
Ph.D. in Agriculture (Specialization in Vegetable Sciences) Agronomy, Soil Science, Plant Pathology, Horticulture, Entomology, Seed Science & Technology, Agri. Economics, Agri. Extension, Genetics and Plant Breeding	3	75,000	75,000	75,000				37,500
Eligibility	*Passed Master's degree (Appropriate discipline/field/subject) with at least 60% Marks *On the basis of performance in GLAET(An online MCQ test of 60 minutes)							

UNIVERSITY POLYTECHNIC

Diploma in Engineering • CSE • EE • ME • CE • ECE • Chem. Eng.	3	66,000	67,000	68,000				34,500
Eligibility	*Passed 10th examination with at least 40% marks and Mathematics as compulsory subject *On the basis of performance in 10th % & PI							
Diploma in Engineering (Lateral Entry) • CSE • EE • ME • CE • ECE • Chem. Eng.	2		66,000	67,000				34,500
Eligibility	*Passed 10+2 examination with Science at least 55% marks or ITI in appropriate field with at least 55% marks. *On the basis of performance in 12th % & PI							

5% Marks Relaxation to SC/ST Category Students.

ADDITIONAL CHARGES

Caution Money (To be paid in the first year of the course, refundable on the successful completion of course)	Examination Charges	Alumni Association Fee
Rs. 5000 (for Diploma in Engineering/D. Pharm. /B. Ed/ B. A. English/ B. A. English (Hons./By Research)/B.Sc. (Hons.) Agriculture/B. Sc. Math/B. Sc. Math (Hons./By Research)/B. Sc. Chemistry/B. Sc. Chemistry (Hons./By Research)/B. Sc. Physics/B. Sc. Physics (Hons./By Research)/M.Sc. (Chemistry)/M.Sc. (Physics)/M.Sc. (Mathematics)/M.Sc. (Agriculture), MA English, Diploma in Library and Information Science, Bachelor of Library and Information Science & Master of Library and Information Science	Rs. 7000/- (Per Academic Year, for all courses)	Rs. 1000/- (to be paid at once in the first year of the course)
Rs. 10000/- for all other courses		

* Option to deposit fee in two parts with Rs. 1500 /- extra per semester

HOSTEL & MESS FEE

Hostel Fee: Subject to availability of rooms as hostel rooms are limited & will be allocated on first come- first serve basis.

Type of Room	Triple Seater	Double Seater	Single Seater	Triple Seater (AC) Limited Seats	Double Seater (AC) Limited Seats	Single Seater (AC) Limited Seats	Premium Flat (Triple Seater Room)	Premium Flat (Double Seater Room)	Wing Single Seater (AC)	Wing Single Seater (Non-AC)
FIRST YEAR										
For Boys	68,000/-	NA	80,000/-	83,000/-	NA	95,000/-	NA	NA	NA	NA
For Girls	68,000/-	75,000/-	NA	83,000/-	91,000/-	NA	68,000/-	75,000/-	NA	NA
SECOND YEAR										
For Boys	NA	78,000/-	83,000/-	NA	NA	NA	NA	NA	1,15,000/-	95,000/-
For Girls	71,000/-	78,000/-	NA	86,000/-	94,000/-	NA	71,000/-	78,000/-	NA	NA
THIRD YEAR										
For Boys	NA	81,000/-	86,000/-	NA	NA	NA	NA	NA	1,18,000/-	98,000/-
For Girls	74,000/-	81,000/-	NA	89,000/-	97,000/-	NA	74,000/-	81,000/-	NA	NA
FOURTH YEAR										
For Boys	NA	84,000/-	89,000/-	NA	NA	NA	NA	NA	1,21,000/-	1,01,000/-
For Girls	77,000/-	84,000/-	NA	92,000/-	1,00,000/-	NA	77,000/-	84,000/-	NA	NA
FIFTH YEAR										
For Boys	NA	87,000/-	92,000/-	NA	NA	NA	NA	NA	1,24,000/-	1,04,000/-
For Girls	80,000/-	87,000/-	NA	95,000/-	1,03,000/-	NA	80,000/-	87,000/-	NA	NA
SIXTH YEAR										
For Boys	NA	90,000/-	95,000/-	NA	NA	NA	NA	NA	1,27,000/-	1,07,000/-
For Girls	83,000/-	90,000/-	NA	98,000/-	1,06,000/-	NA	83,000/-	90,000/-	NA	NA

Hostel Security: Rs. 5000/- in the first year of the course is to be paid additional (refundable on vacating the hostel on successful completion of course).

Note: In case you want to pay Tuition Fee in two installments, you can do the same with an additional charge of **Rs. 1500 per semester**. Second installment of academic fee has to be deposited by 20th December, every year (as per the notice circulated). Above hostel fee is for current regular academic session only (i.e. 10 months). Students will be required to submit their full hostel fee by February every year for the hostel booking of next year; advance hostel booking for the next academic session is done on first come, first serve basis. Hostel will be provided for full regular academic year (i.e. 10 months) only.

Mess Charges: Rs. 40,000/- Per Annum (as advance, mess run on actual expenses basis)

➤ Education Loan Facility Available ⇐



TWICE THE KNOWLEDGE,
DOUBLE THE POWER

UNLEASH YOUR POTENTIAL WITH DUAL DEGREE PROGRAMS

Embark on a revolutionary academic journey with GLA University's dual degree programs, a visionary initiative under the National Education Policy 2020. Now, students can seamlessly pursue two degrees concurrently—a regular B. Tech paired with an online BBA and many more. This innovative approach empowers students to acquire expertise in both engineering and management, fostering comprehensive and future-ready skill sets. Elevate your education with GLAU's commitment to academic excellence and versatility.

Benefits of Dual Degree Programs

- A diverse skill set, combining technical expertise with managerial skills.
- Save time by completing two degrees concurrently, accelerating your career growth.
- More cost-effective than pursuing two programs separately.
- Stand out with a broader knowledge base, enhancing your competitiveness in the job market.
- A holistic understanding of various disciplines, promoting interdisciplinary knowledge.
- Tailor your education to align with your career goals.
- Expand your professional networks, opening doors to diverse career prospects.
- Combining technical and managerial expertise prepares individuals for leadership roles.
- Encourages innovative thinking, essential in solving complex real-world challenges.

Dual Degree Programs: Fee Structure (Per Annum)

Sr. No.	Primary Degree (Offline)	Additional Degree (Online)	Fees of Single Degree	Fee of Dual Degrees	Additional Fees for Second Degree
1	BBA	BCA(O)	110000	130000	20000
2	BBA	B Com(O)	110000	124000	14000
3	BA (English)	BBA(O)	45000	65000	20000
4	BA (English)	BCA(O)	45000	65000	20000
5	BA (Eco)	BBA(O)	45000	65000	20000
6	BA (Eco)	BCA(O)	45000	65000	20000
7	B Com	BBA(O)	110000	130000	20000
8	BCA	BBA(O)	110000	130000	20000
9	B Tech (Except CS core branches)	BCA(O)	185000	205000	20000
10	B Tech (Except CS core branches)	BBA(O)	185000	205000	20000
11	B Tech (CS)	BBA(O)	200000	220000	20000
12	B Sc (Phy,Chem,Maths)	BBA(O)	45000	65000	20000
13	B Sc (Phy,Chem,Maths)	BCA(O)	45000	65000	20000
14	B Sc (AG)	BBA(O)	81000	101000	20000
15	B Sc (AG)	BCA(O)	81000	101000	20000
16	B Sc (Biotech)	BBA(O)	110000	130000	20000
17	B Sc (Biotech)	BCA(O)	110000	130000	20000
18	B Pharm	BBA(O)	156000	176000	20000
19	B Pharm	BCA(O)	156000	176000	20000
20	MBA	MCA(O)	235000	265000	30000
21	MCA	MBA(O)	148000	181000	33000

ADDITIONAL CHARGES: PRIMARY DEGREE (OFFLINE)

Caution Money	Examination Charges	Alumni Association Fee
(To be paid in the first year of the course, refundable on the successful completion of course)	(Per Academic Year, for all courses)	(to be paid at once in the first year of the course)
Rs. 5,000 (BA English/ BA Economics/ B. Sc. Agriculture /B. Sc. Math/ B. Sc. Chemistry/ B. Sc. Physics)	Rs. 7,000/-	Rs. 1,000/-
Rs. 10,000/- for all other courses		
* Option to deposit fee in two parts with Rs. 1,500 /- extra per semester		

ADDITIONAL CHARGES: ADDITIONAL DEGREE (ONLINE)

Registration Fee	Examination Charges
(To be paid in the first year of the course)	(Per Semester, for all courses)
Rs. 2,000	Rs. 1,500/-

BUS ROUTE

Bus Fee: The following Bus fee is for regular academic session only.

Location	Stoppage	Amount
From Mathura City	Krishnapuri, Sadar Bazar, Tank Chauraha, Dampier Nagar, Bharatpur Gate, Deeg Gate, Roopam Cinema, Masani, and Kalyanam Karoti	25,000/-
	Bajrang Dharam Kanta, Baldev Puri, Manas Nagar, Janakpuri, Shanti Nagar, New Bus Stand, Krishna Nagar, Goverdhan Chauraha, and Radha Puram	
	Old RTO, Jai Gurudev Temple, Mandi Chauraha, and Sonkh Road	
	Ganeshra, Radha Puram Estate, Radha Puram	
	Moti Kunj, Chandanvon, Dholi Pyou, Narholi Thana	
	Radha City, Shivasha State, Shri Ji Gardan	
From Vrindavan	Chungi Chauraha, Atalla Chungi, Kailash Nagar, Railway Over Bridge, Chaitnanya Vihar, Hari Nikunj Chauraha, Keshav Kunj, and Iskon Temple	23,000/-
From Township & Surrounding Areas	Aurangabad Chauraha, Veterinary College, Civil Line, Police Line Township, Nawada, Balaji Puram, Sudhama Puri	27,000/-
From Kosi- Kalan	Kosi, Chhata, Akabar Pur	27,000/-
From Baldev	Baldev To GLAU	31,000/-
From Raya	Raya To GLAU	31,000/-
From Goverdhan	Goverdhan To GLAU	31,000/-
From Mant	Mant To GLAU	29,000/-
From Hodal	Hodal To GLAU	34,000/-

Bus Fee: (*Subject to revision every year) Following Bus fee is for the regular academic session only.

* UGC norms will adhere for fee refund *All the disputes are subjected to Mathura judiciary.



MERIT-BASED SCHOLARSHIPS

GLA University offers merit-cum-means scholarships in order to encourage talent and make quality education accessible to all.



1. Scholarship for Meritorious students:

For B Tech Students On the basis of PCM

percentage: # Candidates eligible for scholarship on the basis Physics, Chemistry & Mathematics percentage at 10+2 level as mentioned below:

PCM Percentage	Scholarship amount
95-100	75,000/-
90-94.99	50,000/-
80-89.99	25,000/-

Note: The student has to maintain a minimum CPI of 8.00 to avail the scholarship in the next year of his/her studies. The scholarship amount received in the first year will be applicable for all subsequent years

For M Tech students:

1. Scholarship for GATE qualified candidates is Rs. 50,000 per annum.
2. Scholarship for Non- GATE and GLAET qualified candidates is Rs. 25,000 per annum

Note: The student has to maintain a minimum CPI of 6.5 to avail the scholarship in the next year of his/her studies.

for M.Sc (Biotech/Microbiology/Bioinformatics)

Students: Scholarship for GLAET qualified candidates is Rs 30,000 per annum

On the basis of JEE-MAIN Percentile: Candidates eligible for scholarship on the basis JEE-MAIN Percentile as mentioned below:

JEE-MAIN Percentile	Scholarship amount
95-100	90% tuition fee waiver
90-94.99	75% tuition fee waiver
85-89.99	25% tuition fee waiver

Note: The scholarship amount received in the first year will be applicable for all subsequent years. The student has to maintain a minimum CPI of 8.00 to avail the scholarship in the next year of his/her studies

For Ph.D. Students: A teaching Assistantship of Rs. 25,000/- per month will be given to selected full time research scholars in all streams.

2. Scholarship for general & OBC candidates (Economically weak):

Those students whose parents' annual income is less than Rs. 2 Lakhs are eligible to avail scholarship through social welfare department (Samaj Kalyan Vibhag) of UP Govt

For B Pharm students: A scholarship worth Rs. 25,000/- per annum for the candidates possessing more than 90% marks in Physics, Chemistry and Mathematics / Biology at 10+2 as per eligibility requirements.

Note: The student has to maintain a minimum CPI of 8.00 to avail the scholarship in the next year of his/her studies.

3. Scholarship for SC/ST Candidates:

Those students whose parents' annual income is less than Rs. 2 Lakhs are eligible to avail scholarship through social welfare department (Samaj Kalyan Vibhag) of UP Govt

For M Pharm students:

1. Scholarship for GPAT qualified candidates is Rs. 50,000 per annum.
2. Scholarship for Non-GPAT and GLAET qualified candidates is Rs. 25,000 per annum

Note: The student has to maintain a minimum CPI of 6.5 to avail the scholarship in the next year of his/her studies.

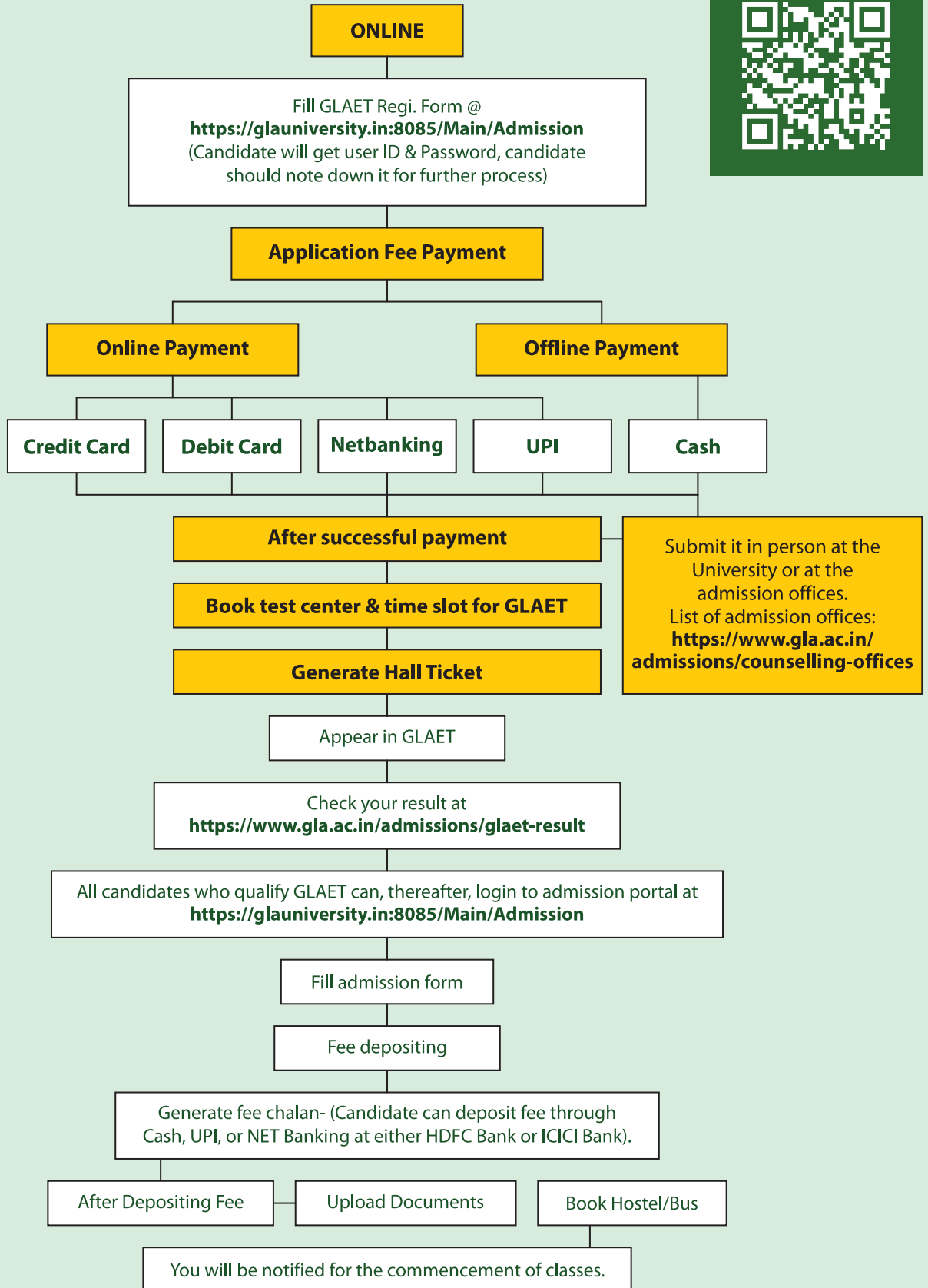
4. As per the UP Government's initiative to promote girl child education:

- If two real sisters take admission in the same academic year, **100% tuition fee** of one sister will be waived.
- If the sisters enroll in **different programs**, the **tuition fee of the program with the lesser fee** will be waived.



GLAET REGISTRATION

SCAN HERE
TO REGISTER
FOR ADMISSION



*Registration Test Fee 700/- for all other courses and 500/- for D. Pharm, Diploma in Engineering, Diploma in Library and Information Sciences and B. Ed.
Apply Now:- <https://glauniversity.in:8085/Main/Admission>

GREAT LEARNING ASSURANCE, *now* online.

The Centre for Distance and Online Education, GLA University is a foray into the sphere of digital learning by the GLA University, devoted to providing an exceptional education to learners through its burgeoning courses in the fields such as Business Administration, Management, Computer Application, and Accounting. It provides a full-fledged smart-learning experience with digital self-learning material, live sessions, and video-lecture series to the determined individuals seeking affordable and accessible quality education meeting industry standards to enhance their analytical skills for the corporate working environment.

REGISTER HERE



online.gla.ac.in

UGC APPROVED PROGRAMS OFFERED

- BBA
- BCA
- B.Com
- MBA
- MCA

Enquire At:

9045954396, 7617595602, 7617595603

www.online.gla.ac.in

GET IN TOUCH

Campus:

17 Km stone, NH-19, Mathura-Delhi Road,
P.O.- Chaumuhan, Mathura - 281 406 (U.P) INDIA
Ph.: +91-5662-250900, 25909, 241489, +91-9927064017
E-mail: admission@gla.ac.in, Website: www.gla.ac.in

Admission Helpline

+91-9027068068

Greater Noida Office

15A, Knowledge Park II,
Greater Noida - 201310 (U.P) INDIA
Ph.: +91-7037256969

Delhi Office Ph.:

+91-9319264467
+91-9811447444

Agra Office Ph.:

+91-7060141357
+91-9084667414
+91-8077017741
+91-8218794500

Aligarh Office Ph.:

+91-9068012379
+91-9193712380

Alwar Office Ph.:

+91-8077255648

Badaun Office Ph.:

+91-7037555459
+91-8267972201

Bareilly Office Ph.:

+91-7037555458

Basti Office Ph.:

+91-8795453727
+91-7078287770
+91-72170 69603

Bhagalpur Office Ph.:

+91-7037555456

Bharatpur Office Ph.:

+91-9672002340

Bulandshahr Office Ph.:

+91-9520522828

Dehradun Office Ph.:

+91-8467070177

Dholpur Office Ph.:

+91-7014666233

Etah Office Ph.:

+91-9759823502
+91-9027195323
+91-7417177501

Etawah Office Ph.:

+91-9045288366
+91-70378 50043

Faridabad Office Ph.:

+91-7818873942

Farrukhabad Office Ph.:

+91-7348422642
+91-7906390944

S
U
S
T
A
I
N
A
B
L
E
D
E
V
E
L
O
P
M
E
N
T

Firozabad Office Ph.:

+91-9548866580
+91-9520973861

Gorakhpur Office Ph.:

+91-9919171750
+91-72170 69603

Guwahati Office Ph.:

+91-9435059373
+91-6003302750

Gwalior Office Ph.:

+91-9917875317
+91-9012740002

Hathras Office Ph.:

+91-7455079166
+91-7455078766

Hisar Office Ph.:

+91-8923996953

Jhansi Office Ph.:

+91-9997956957

Kanpur Office Ph.:

+91-8009509191
+91-8808898288

Kasganj Office Ph.:

+91-7037246693
+91-7618326693

Kolkata Office Ph.:

+91-8979608208

Lucknow Office Ph.:

+91-7355364016
+91-9936694552

Mainpuri Office Ph.:

+91-9634088672

Meerut Office Ph.:

+91-7037416969

Moradabad Office Ph.:

+91-8467070177
+91-7037555460

Palwal Office Ph.:

+91-7082867748
+91-7082866967

Patna Office Ph.:

+91-9934814383
+91-8439954901

Prayagraj Office Ph.:

+91-9453593702
+91-9044893668
+91-8290994353
+91-9557483838

Ranchi Office Ph.:

+91-8979609042

Varanasi Office Ph.:

+91-9918800603
+91-9557483838

Visakhapatnam Office Ph.:

+91-9773581881
+91-9030780481
+91-8923998063

International Helpline

**Nepal**

+91-9871826201

**Bhutan**

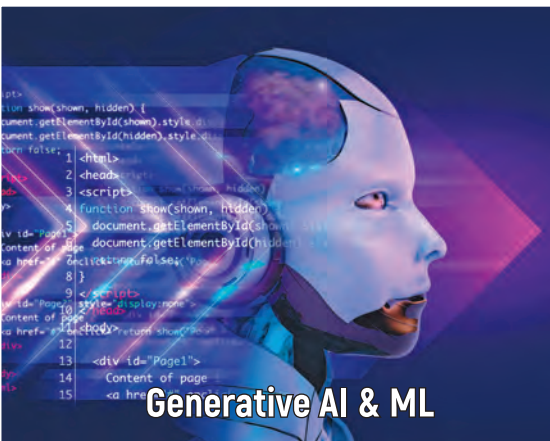
+91-9871826201

**Bangladesh**

+91-9871826201

**Afghanistan**

+91-9871826201



GLA
UNIVERSITY
Recognised by UGC Under Section 2(f) & 12B Status

Accredited with **A+** Grade by **NAAC**

Mathura | Greater Noida

MATHURA CAMPUS

17km Stone, NH-19, Mathura-Delhi Road, P.O. Chaumuhan, Mathura-281406 (U.P.) INDIA

Contact Us: +91-5662-250900, 250909, 241489, +91-9927064017

GREATER NOIDA CAMPUS

15 A, Knowledge Park - II, Greater Noida - 201310 (U.P.) INDIA

GLA UNIVERSITY ONLINE

Mob.: +91-7617595602, +91-7617595603

Find details at: online.gla.ac.in

Admission Helpline:
+91 9027068068

Website: www.gla.ac.in
Email: admission@gla.ac.in



glauniv



glauniv



school/gla-university

Disclaimer: This is a controlled document. Unauthorized access, copying and replication are expressly prohibited. This document must not be copied in any form without seeking permission from the competent authority at GLA University.